

ENCORE  
MODULAR LOUNGE



ADAPTABLE

# MODULARITY







DESIGNED BY DAVID GUTGSELL

**MODULAR CONFIGURATION**

ENCORE IS AVAILABLE IN A MULTITUDE OF LOUNGE OR BENCH COMPONENTS THAT CAN BE CONFIGURED WITH LINKING OR FREESTANDING TABLES TO FORM AN IMPRESSIVE ARRAY OF LOUNGE CONFIGURATIONS.

> BRIGHTON FINISH



#### FREESTANDING CONFIGURATION

COMPONENTS CAN BE SPECIFIED WITH CENTER ARMS TO DEFINE INDIVIDUAL SEATING SPACES WHILE REDUCING THE OVERALL FOOTPRINT SIZE OF INSTALLATIONS OFTEN ASSOCIATED WITH FREESTANDING COLLECTIONS.

> BRIGHTON FINISH



#### FREESTANDING CONFIGURATION

ENCORE IS AN IDEAL SOLUTION FOR COLLABORATIVE SEATING AREAS. OPTIONAL TABLET ARMS ALLOW AMPLE ROOM AS A WRITING SURFACE OR FOR TODAY'S TECHNOLOGY. OPTIONAL FRONT CASTERS AND A BACK HANDLE PROVIDE EASY MOBILITY.

> NATURAL CHERRY FINISH



#### MODULAR CONFIGURATION

OPPOSITE FACING LOUNGE ARRANGEMENTS CREATE MULTI-DIRECTIONAL ACCESS WITHIN OPEN PLAN ENVIRONMENTS. INLINE 90° CORNER TABLES CONFIGURE TO FORM INSIDE OR OUTSIDE CORNERS THAT CONFIGURE AROUND EXISTING BUILT-IN ARCHITECTURAL ELEMENTS.

> NATURAL MAPLE FINISH



#### MODULAR CONFIGURATION

MODULAR BENCH COMPONENTS ALLOW ACCESS FROM MULTIPLE DIRECTIONS AND ARE AVAILABLE IN A VARIETY OF ANGLED SHAPES TO CONFIGURE INTO SQUARE, CIRCULAR OR SERPENTINE CONFIGURATIONS. ROTATING TABLET ARMS MAY BE ADDED TO ANY BENCH OR ARMLESS SEATING COMPONENT FOR ADDITIONAL VERSATILITY.

> NATURAL CHERRY FINISH



## FREESTANDING COMPONENTS



ONE SEAT



TWO SEAT



THREE SEAT



OVAL MAGAZINE TABLE



ROUND MAGAZINE TABLE



SQUARE MAGAZINE TABLE



SQUARE END TABLE



OVAL MAGAZINE TABLE



ROUND MAGAZINE TABLE



SQUARE MAGAZINE TABLE



SQUARE END TABLE



RECTANGULAR MAGAZINE TABLE

## MODULAR COMPONENTS



ARMLESS



22.5° INSIDE SEAT



22.5° OUTSIDE SEAT



45° INSIDE SEAT



45° OUTSIDE SEAT



SQUARE BENCH



22.5° BENCH



45° BENCH



SQUARE LINKING TABLE



22.5° LINKING TABLE



45° LINKING TABLE



90° LINKING TABLE



SQUARE LINKING TABLE



22.5° LINKING TABLE



45° LINKING TABLE



CENTER ARM



RIGHT ARM



LEFT ARM

**ARM OPTIONS**

AVAILABLE WITH FULLY UPHOLSTERED, UPHOLSTERED WITH WOOD CAP OR OR METAL WITH WOOD CAP. METAL ARM ACCENTS ARE AVAILABLE IN SILVER OR BLACK.



FULLY UPHOLSTERED



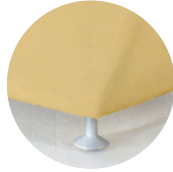
UPHOLSTERED WITH WOOD CAP



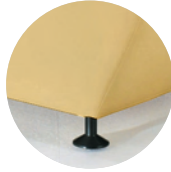
METAL WITH WOOD CAP

**LEG OPTIONS**

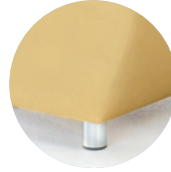
AVAILABLE WITH ADJUSTABLE HEIGHT DISK LEGS, FIXED HEIGHT COLUMN LEGS OR CASTERS FOR EASY MOBILITY.



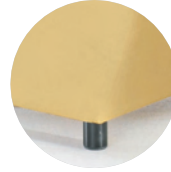
DISK SILVER



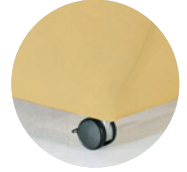
DISK BLACK



COLUMN SILVER



COLUMN BLACK



CASTERS

**TABLET OPTIONS**

FOLDING TABLET ARM FEATURES A TILT AND STOW MECHANISM THAT ALLOWS FOLD DOWN STORAGE WHEN NOT IN USE. ROTATING TABLET ARM PIVOTS 360° AND IS DESIGNED FOR USE ON ARMLESS AND BENCH SEATING MODELS. ROTATING TABLET METAL ARM IS AVAILABLE IN SILVER OR BLACK. TABLETS MAY BE SPECIFIED AS RIGHT OR LEFT.



FOLDING TABLET ARM (PIVOTS IN AND OUT)



FOLDING TABLET ARM IN STOWED POSITION



ROTATING TABLET ARM (PIVOTS 360°)

**FREESTANDING TABLE LEG OPTIONS**

AVAILABLE WITH DISK OR COLUMN METAL LEGS TO COORDINATE WITH SEATING.



DISK SILVER



DISK BLACK



COLUMN SILVER



COLUMN BLACK

**LINKING TABLES**

FEATURE A FLAT EDGE WITH VENEER OR LAMINATE TOPS AND ATTACH BETWEEN LOUNGE OR BENCH UNITS.



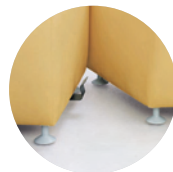
SILVER



BLACK

**LINKING BRACKET**

EACH ENCORE MODULAR COMPONENT INCLUDES A LINKING BRACKET FOR MAKING QUICK AND EASY CONNECTIONS BETWEEN COMPONENTS.



LINKING BRACKET

**POWER**

OPTIONAL TILT-OUT POWER CENTERS MAY BE SPECIFIED ON ARMLESS LOUNGE AND BENCH UNITS. AVAILABLE IN SILVER OR BLACK.



MINI-POWER TILT OUT

**CONTRASTING TEXTILES**

FOR ADDED DESIGN FLEXIBILITY, ENCORE MAY BE SPECIFIED WITH CONTRASTING TEXTILES ON ARMS, BACKS OR SEATS.



CONTRASTING TEXTILES



PO BOX 231  
225 CLAY STREET  
JASPER, INDIANA 47547

**800-457-4511**  
FAX 812-936-9979  
JSIFURNITURE.COM



JSI IS COMMITTED TO REDUCING, REUSING, AND RECYCLING ENVIRONMENTAL PRACTICES THROUGHOUT ITS MANUFACTURING AND MARKETING PROCESSES. PRINTED ON RECYCLED PAPER. PLEASE RECYCLE.

FORM NO. J.MPS.EN.0411.3000

