

SONA™



Advanced performance meets acclaimed style— all in Sona, a chair that delivers innovative ergonomics and supreme all-day comfort.





Challenge the status quo with this distinctive task and conference chair, designed by Jorge Pensi.

Sona is functional and completely customizable, thanks to modern styling options (like a clever pull handle) and a variety of back styles, arm options and knit designs. You can always expand your creative choices with trusted fabric partners like Maharam, Momentum, DesignTex, Spinneybeck and Green Hides. Best yet, Sona is affordable, making it a smart choice for today's corporate, healthcare or education settings. Looks good and feels good— all day long.

Innovation. Style. Selection.™

FULLY ADJUSTABLE ARM



shown in Cool Grey Textured Knit with Boom Mushroom by Momentum

OPEN LOOP ARM



shown in Black Textured Knit with Messenger Capri by Maharam



We Get Seating.  
We Get You.™

SILVER METALLIC  
BASE

PULL HANDLE

Graceful and balanced.  
Contemporary and refined.  
Sona scores high on flair,  
finesse and feel-good support.

LOOP ARM



shown in Shadow Twin Knit with  
Messenger Tangelo by Maharam



#### Sustainability

You can rest assured that every product SitOnIt Seating makes is GREENGUARD and GREENGUARD Children and Schools certified, providing you with the confidence you need and the environmental stewardship you've come to expect. Made from readily available, recyclable materials.



#### Durability

Like all SitOnIt Seating products, the Sona series is built to last. Every component meets and exceeds ANSI-BIFMA standards. Further protecting your investment is SitOnIt Seating's standard lifetime warranty, which helps ensure complete satisfaction for years to come.

## Ergonomics / Comfort

Sona goes the distance with total comfort and flexible movement. Its generous back fits the spine's natural curvature for optimal back support, with an adjustable back height that provides lumbar support to fit everyone. The knit material provides a soft, comfortable feel. Choose from a variety of colors and designs to suit your space best.

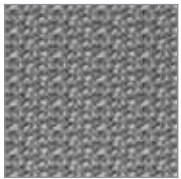
Ergonomically, Sona is truly a work of art. It offers multiple arm styles— with both black and silver metallic finishes. The fully-adjustable arms provide a full range of adjustability, including the ability to adjust the arm pad depth and width while you sit, ensuring the perfect ergonomic fit for each user, every time.

Three controls to personalize comfort: a Swivel Tilt, Knee Tilt and Enhanced Synchro. When you're ready to recline, the Enhanced Synchro smoothly moves your back and seat together for optimal motion and comfort. Seat slider, back tension and lock positions are all easy to adjust to fit each individual's needs. The waterfall seat relieves pressure from the back of the legs, allowing for healthy circulation.



shown in Mocha Textured Knit with Messenger Hay by Maharam

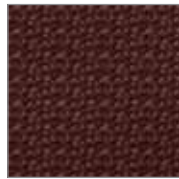
## Textured Knit



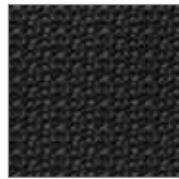
Cool Gray



Mocha



Merlot



Black



Ocean



Forest

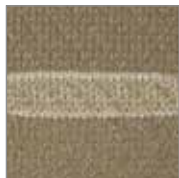


Dune

## Twin Knit



Winter Gray



Toffee



Licorice



Shadow



## ABOUT THE DESIGNER

### JORGE PENSI

JORGE PENSI DESIGN STUDIO was set up in 1984 in Barcelona's Gothic quarter, specialising in furniture and lighting design, the visual image of its products and staging for different types of events. Since then the studio has consolidated its position as a global point of reference for contemporary design. Its minimalist and expressive designs have received numerous prizes and awards. Some of its first products, such as the Toledo chair or the Regina lamp, have since become design icons.

