



< Available in Stools.



Available in Task. >

ten™



Stacks 10 high on a dolly.  
Stacks 4 high on the floor.



Gang multiple chairs together.

ABOVE MODEL: 701-A5-W15-GR.A  
TOP LEFT MODEL STOOL: 715-T4-G5-A5-GR.A  
TOP RIGHT MODEL TASK: 705-S1-A5-GR.A

  
highmark  
seating made simple

TEN SERIES

ten™

Ten is truly a "10" in all areas- design, comfort performance and versatility. Its sophisticated design features a slender profile, lean curves and a perfectly styled back. Ten's wall saver frame is available in both silver and black. Its flexibility and comfort level make Ten an ideal guest or conference chair.



ten | NO ARMS

701-GR.A

- Thermoplastic Back with Upholstered Seat
- Six Plastic Colors
- Silver or Black Frame with Glides
- No Arms



ten | WITH ARMS

701-A5-GR.A

- Thermoplastic Back with Upholstered Seat
- Six Plastic Colors
- Silver or Black Frame with Glides
- With Arms

Available colors:



Due to inconsistencies of computer monitors and printers, we cannot guarantee colors shown are accurate. Please order a sample color swatch.

Designed by: Francisco Romero of Phidesign

COVER MODEL: 701-A5-GR.A

  
highmark  
seating made simple

15731 Graham Street  
Huntington Beach  
California 92649  
highmarkergo.com

T : 714.903.2257  
800.441.4975  
F : 714.903.0644

customerservice@highmarkergo.com



ten™

**Design, Comfort and Flexibility.** The Ten series chairs are available in six thermoplastic colors or with an upholstered seat & back for added comfort. Ten is also available in a black or silver wall saver frame with a basic task or swivel tilt control and comes with or without arms.



< Fully upholstered Ten with casters. >

ten™ mesh

With Ten mesh smart new look and a choice of stool, side or task version and a variety of fabric seats to choose, Ten mesh will blend right in with any office décor. Its wall saver frame is available in both silver and black. When it comes to strength, durability and sustainability, Ten's 13 gauge 1" diameter steel frame with Highmark's lifetime warranty will knock any competitor out of the ball park and it's rated up to 300 lbs. Mix and match both Ten and Ten mesh to any office environment to make that design touch at an eye-catching price point.



Ten stool with mesh back. >



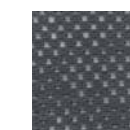
Available Colors:



Black (MBK)



Silver (MSL)



Dark Grey (MDG)

Due to inconsistencies of computer monitors and printers, we cannot guarantee colors shown are accurate. Please order a sample color swatch.