



FACET™ is a “multipurpose” seating series in every aspect. Facet offers comfortable design features, end user convenience and unlimited possibilities. Facet is everything you could hope for in a multipurpose chair and then some.

- Facet is available with casters or glides.
- Facet is available arm or armless.
- Molded contoured plastic arm.
- Clear non-marring poly carbonate glides are standard.
- The compound contoured seat and back are generously proportioned giving you the feel of a much larger chair.
- Waterfall seat front for extended comfort.
- Facet stacks five high on the floor.
- Facet can be ganged together with optional brackets (AG30 for arms and AG31 for armless chairs) to maintain alignment and efficient use of space.



Y930 15C 77



Y930 155 77

The back is comprised of 5 ply plywood. The back foam is 2" high resilient multi contoured Ultrafoam® and one half inch foam on the outer back.

FACET'S seat board is a 7 ply plywood seat complete with clinch nut inserts for secure metal to metal attachments. The seat foam consists of 2 1/2" high resilient Ultrafoam® for a comfortable seating experience.

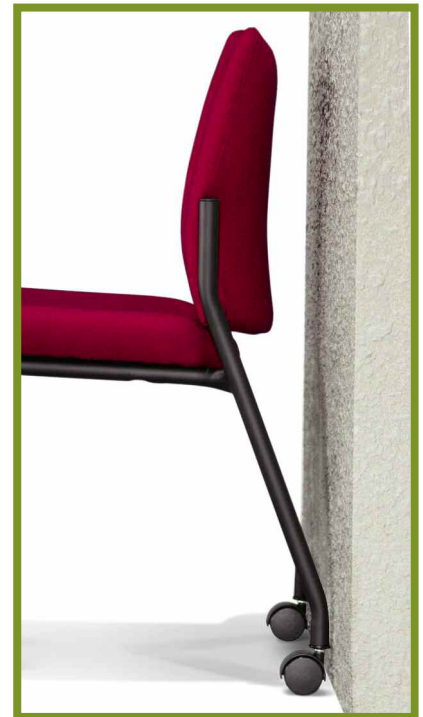


Y931 155 77



Y932 26C 01

WALL SAVER FRAME



Facet has a wall saver frame which minimizes costly scuffs and marks on the wall.



Y930 155 77 (Chairs) R943 151 77 (Table)

Facet sled base

Available also as a sled version making it ideal for lobbies, waiting rooms, cafeterias, break rooms, etc.



Facet can be ganged together with optional brackets (AG30 for arms and AG31 for armless chairs) to maintain alignment and efficient use of space.



Y935 156 77



Y934 156 77

FACET'S all welded frame consists of 1" 14 gauge tubular steel legs and back uprights with 1" 16 gauge stretchers. All stackable chairs come with a plastic stack pad to prevent damage of the foam or fabric when stacked. Sled versions do not stack.



Y950 902 77



Z931 150 77

Facet Tablet Arm flips up and has a 2" depth adjustment that moves backward and forward for a wider range of personal comfort.



Y938 158 21
Left Tablet



Y937 157 21
Right Tablet

FACET™ molded backs, flip seats and arms take Facet to a higher level in multipurpose seating. Facet offers comfortable design features, end user convenience and unlimited possibilities.

- Facet is also available with a molded back.
- Facet is also available with a flip seat/flip arm design to cater to those who prefer to roll and nest chairs versus stacking them.
- Facet molded back with it's perforated design is ideal for high traffic areas.
- Waterfall seat front for extended comfort.
- Standard anti-tip feature on all versions.
- Facet molded back stacks five high on the floor.
- Facet molded back has a wall saver frame/back which minimizes costly scuffs and marks on the wall.
- Facet molded back is available with a tablet arm and an optional bookrack.
- Facet molded back is offered in a stool version.



Y940 155 77



Y940 15C 21



Y941 15C 21



Y942 26C 01



Y943 25C 21



R964 152 77
End Table



R965 153 77
Magazine Table



Y940 155 77 (Chairs) R943 151 77 (Table)



Facet Roll & Fold also has a wall saver frame.

Facet sled base

Available also as a sled version making it ideal for lobbies, waiting rooms, cafeterias, break rooms, etc.



Facet can be ganged together with optional brackets (AG30 for arms and AG31 for armless chairs) to maintain alignment and efficient use of space.



Y945 156 77



Y944 156 77

FACET'S all welded frame consists of 1" 14 gauge tubular steel legs and back uprights with 1" 16 gauge stretchers. All stackable chairs come with a plastic stack pad to prevent damage of the foam or fabric when stacked. Sled versions do not stack.

Facet also offers a stool with all the same features as the Y941 155 Chair.



Z941 150 21

Facet Tablet Arm flips up and has a 2" depth adjustment that moves backward and forward for a wider range of personal comfort



Y948 158 21
Left Tablet



Y947 157 21
Right Tablet

FACET™ is more versatile than ever. Facet Wood with three distinct back designs and seven wood finishes. The wood backs are available in a solid wood back, hand hold cutout, or a tri-slot cutout. Facet Wood finishes include mahogany, walnut, cherry, brown cherry, autumn oak, maple and espresso. Facet Mesh provides a high tech appearance at an affordable price. Now more than ever there is a Facet just for you!

- Facet Mesh/Wood are available with casters or glides.
- Facet Mesh/Wood are available arm or armless.
- Molded contoured plastic arm.
- Clear non-marring poly carbonate glides are standard.
- The compound contoured seat and back are generously proportioned giving you the feel of a much larger chair.
- Waterfall seat front for extended comfort.
- Facet Mesh/Wood stacks five high on the floor.
- Facet Mesh/Wood can be ganged together with optional brackets (AG30 for arms and AG31 for armless chairs) to maintain alignment and efficient use of space.



YH30 W5C 77C



YC34 W56 77C

The one half inch back is comprised of 9 ply finished quality veneers on the inner and outer face.

FACET'S seat board is a 7 ply plywood seat complete with clinch nut inserts for secure metal to metal attachments. The seat foam consists of 2 1/2" high resilient Ultrafoam® for a comfortable seating experience.



YM42 M6C 01

Facet mesh back frames are ergonomically shaped to follow the natural curve of the human body. The double layered pellicle mesh material offers firm body fitting support and comfort.



YM41 M5C 01



YS31 W55 21C



YH32 W6C 01C



YH30 W55 77C (Chairs) R943 151 77 (Table)



YS50 W02 77C

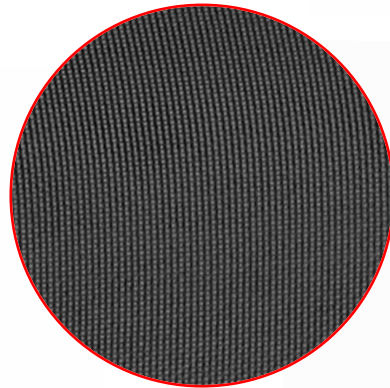
Facet mesh



YM41 M55 77



YM40 M55 01



pellicle mesh



YM40 M5C 01



ZM41 M50 77

CHROMCRAFT  **CONTRACT**

Chromcraft Revington, Inc.

No.1 Quality Lane • Senatobia, MS 38668 - USA
1-866-777-1951 • Fax 1-800-336-1651
www.chromcraftcontract.com

Refer to price list for complete product number, finishes, fabrics and availability.